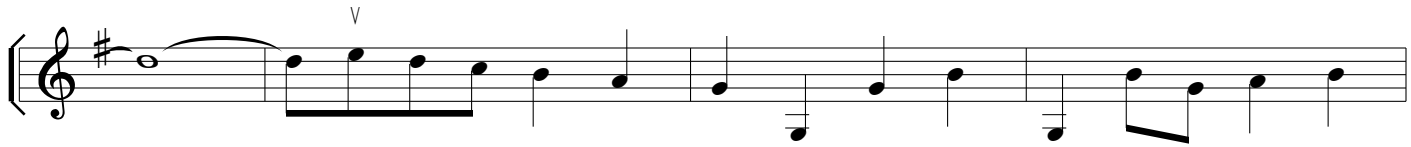
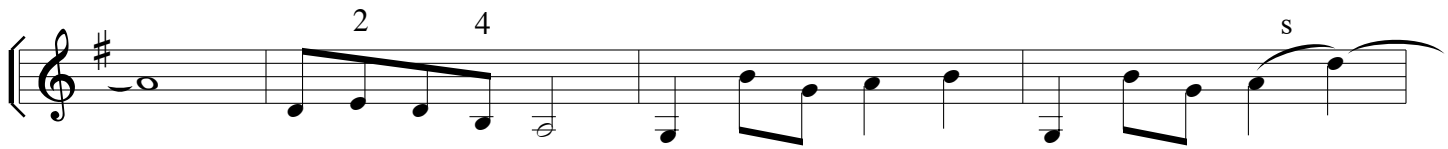
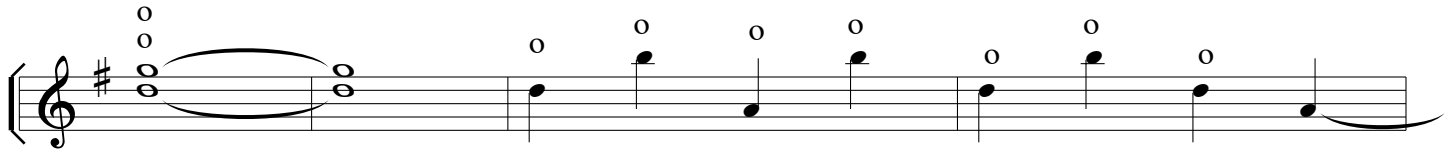
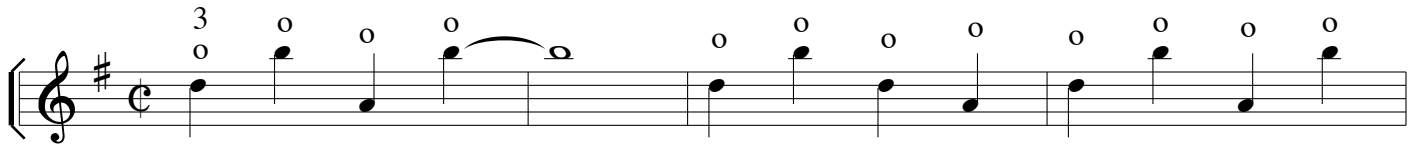


Leather Britches

Guitar 2 (intro)



NOTE: Tune low E-string to "D" and A-string to "G."

o = harmonic.

Guitar 2 (cont.)

Leather Britches

Part A

Musical notation for Part A, measures 1-8. The key signature is one sharp (F#). The notation includes a repeat sign at the beginning. Chord diagrams are provided above the staff: G* (measures 1-2), G (measures 3-4), G (measure 5), D (measures 6-7), and D G (measure 8). Fingerings are indicated by numbers 1-4. Dynamics include *p* (piano) and *s* (sforzando). Articulation includes accents (*^*) and breath marks (*h h*). A first and second ending bracket is shown over measures 7-8.

Part B

Musical notation for Part B, measures 9-16. The key signature is one sharp (F#). The notation includes a repeat sign at the beginning. Chord diagrams are provided above the staff: G (measures 9-10), C (measures 11-12), G (measures 13-14), D (measures 15-16), and D G (measures 17-18). Fingerings are indicated by numbers 1-4. Dynamics include *p* (piano) and *s* (sforzando). Articulation includes accents (*^*) and breath marks (*h h*). A first and second ending bracket is shown over measures 17-18.

*See appendix for Texas-style chord diagrams and sequence.